

Equity-Focused Care in Context: Interprofessional Training and Community-Rooted Practice Across the Life Course

Dr. Praseedha Janakiram, MD, CCFP, FCFP, MPH FCM

Family Physician, Crossroads Clinic, Women's College Hospital

Program Director Global Health Education

Faculty Lead, Toronto Addis Ababa Academic Collaboration in Family Medicine

Co-Lead, New Evolving Academic Leaders, Center for Faculty Development

Assistant Professor, Department of Family and Community Medicine

University of Toronto

Prince Mahidol Award Conference, 2026

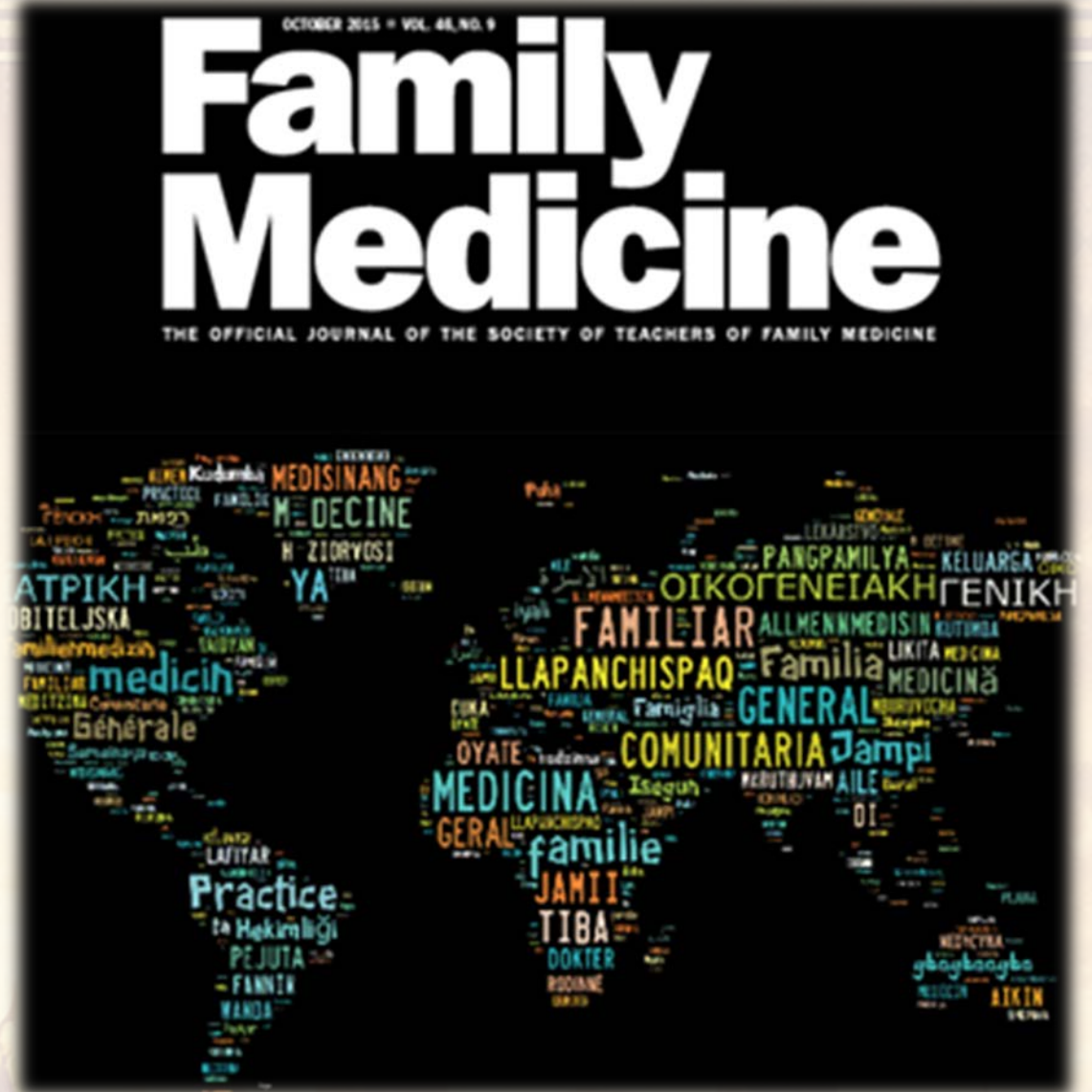
Parallel Session 1.3: Subtheme: *The Role of Family, Community, and Supportive Environments Amid Demographic Shifts*

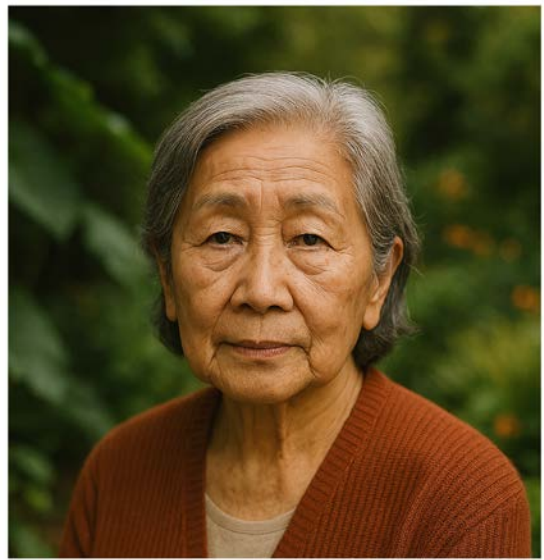
Thursday 29 Jan 2026

Objectives

- Share a Canadian perspective on health equity, cultural safety, and training health professionals to work compassionately with structurally marginalized populations
- Reflect on how care is delivered and who delivers it
- Consider interprofessional collaboration and training with a lens to address SDOH

When I think about
the world of family
medicine and primary
care....





Family Medicine and Primary Care

- **Person-centered**
- **First Contact**
- **Continuity**
- **Comprehensiveness**
- **Coordination**
- ***Community-based***

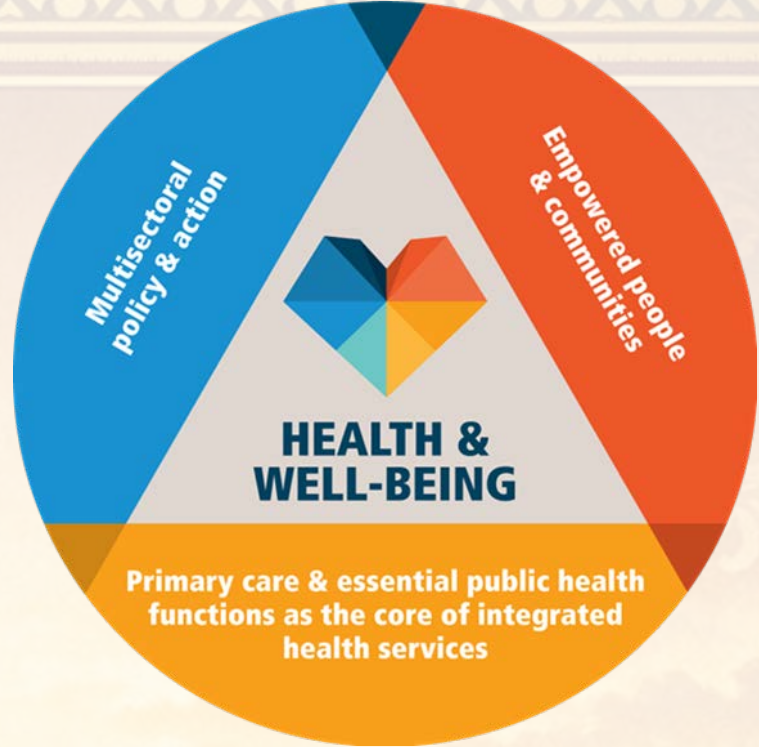
**CORE
VALUES**

**ESSENTIAL
DRIVERS**



OF OUR WORK

3 GOOD HEALTH AND WELL-BEING

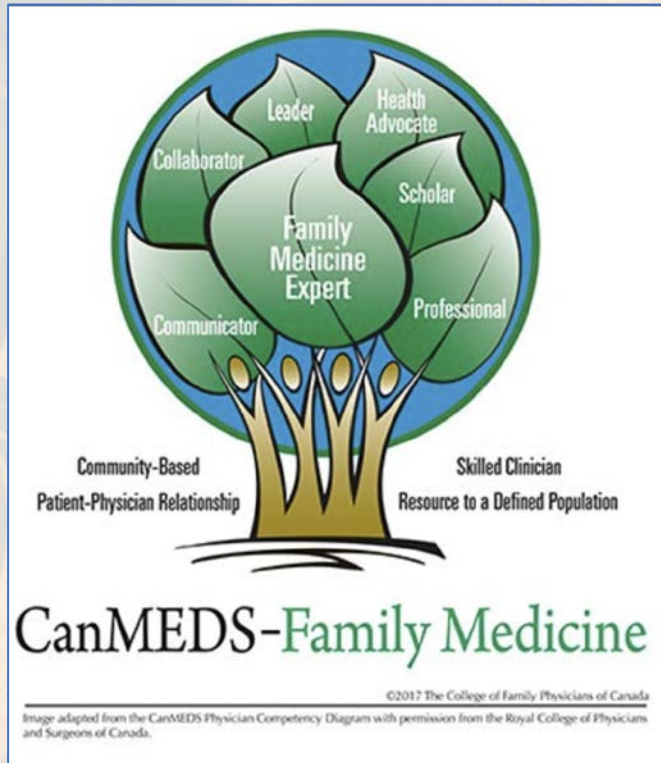


FAMILY MEDICINE

Can and does play a critical role in the primary care through interprofessional leadership of community-responsive team based care

Driving us towards strong and robust high quality primary care in service of a more equitable, compassionate, community-based health systems

The Four Principles of Family Medicine in Canada



- A family physician is a skilled clinician
- A family physician is a resource to a defined practice population
- Patient-physician relationship is at family medicine's core
- Family physicians are based in the community—speaks to family physicians' wider role within the health system

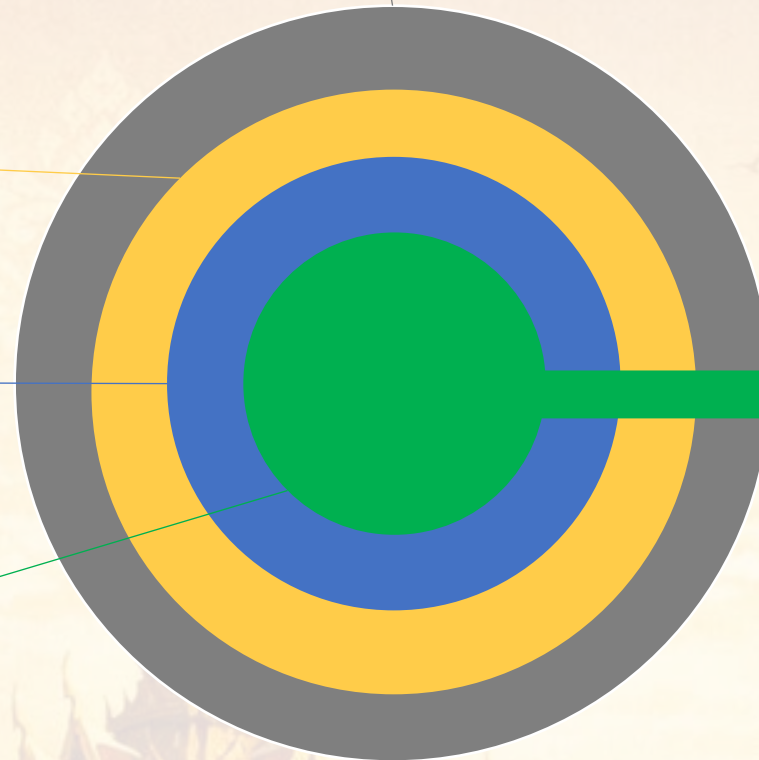
Family medicine at the core

Global Programs & Policies (WHO, WB, etc.)

National Policies

Primary Health Care

Family Medicine



Access
Care of most vulnerable
Address SDOH
Be accountable
Comprehensive
Continuous
Coordinated
Quality

How Can Family and Community Medicine Deliver on the PHC Approach?

“Primary health care is where the battle for human health is won or lost.”

Dr. Danielle Martin

Training Together, Training for a Culture of “WE” & “US”

Equity

Compassion

Collaboration

Cultural Humility



Our Team Re-Imagined

TEAM-Based Care



Core Competencies for Interprofessional Team Collaboration



Inter-professionalism

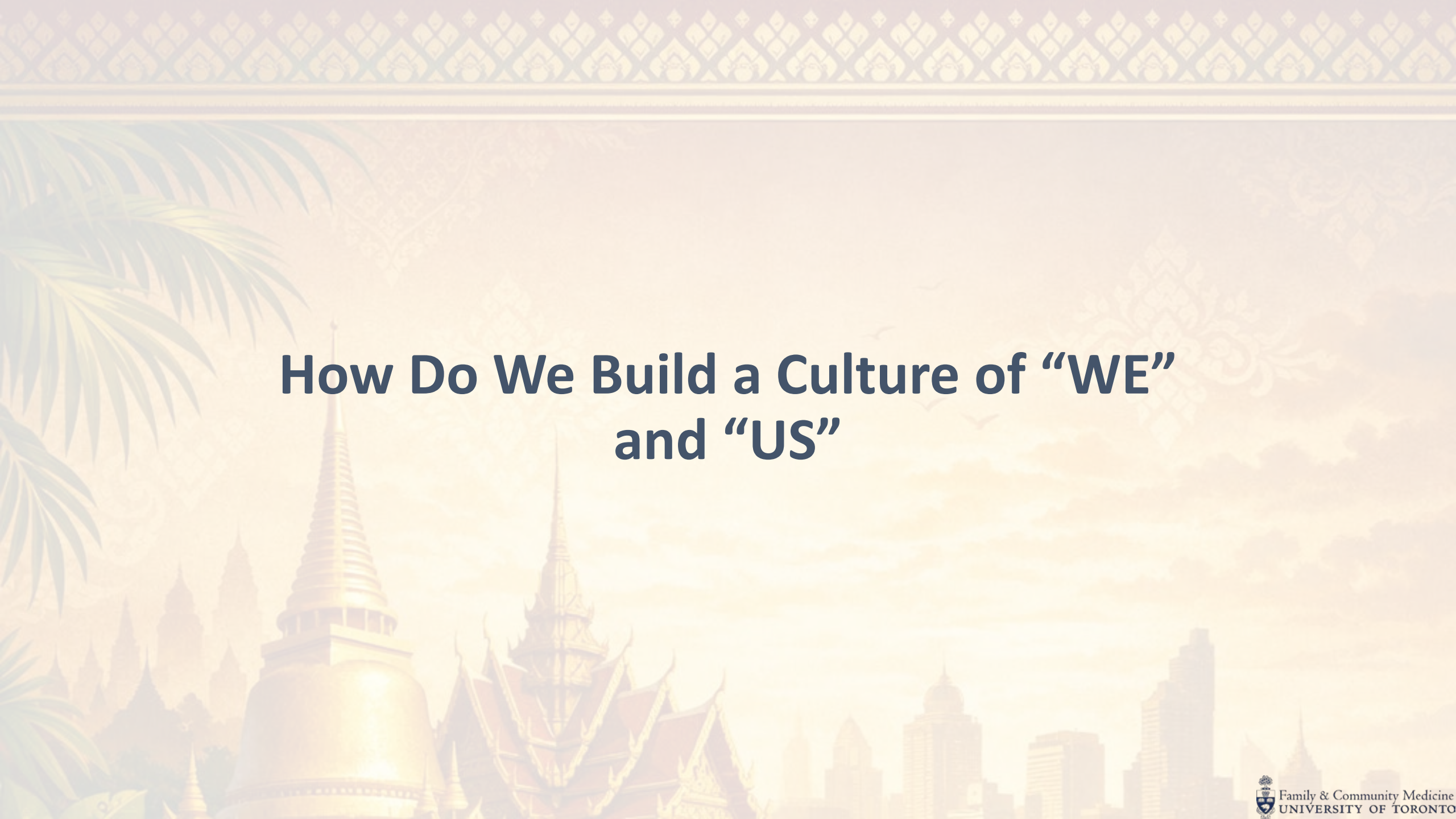
Care

Education

Leadership

Our Team Re-Imagined

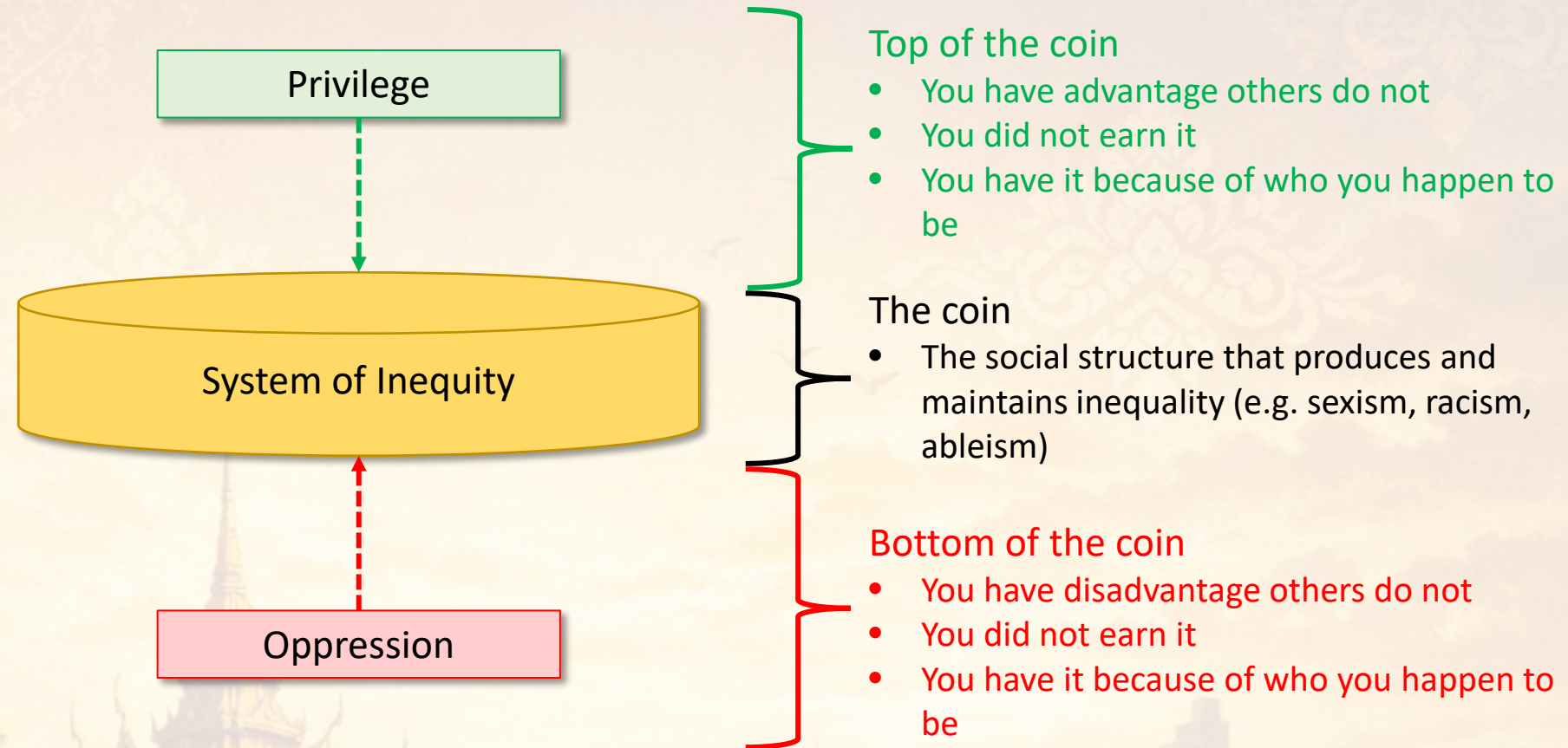
- Where patient partners and voices are part of every team
- Representing empowered communities and people
- With voices amplified



How Do We Build a Culture of “WE” and “US”

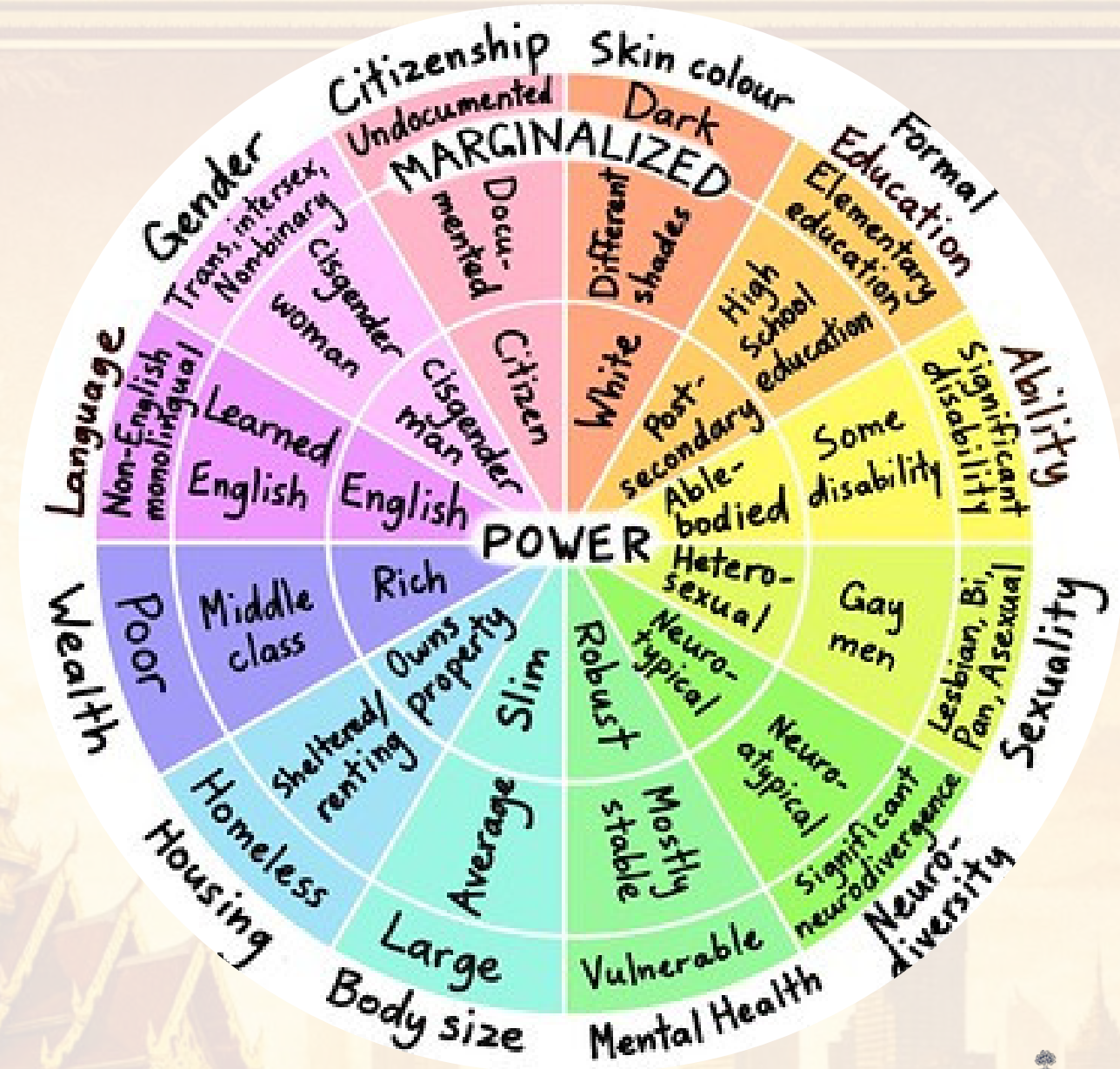
Privilege and Critical Allyship

Coin Model of Privilege and Critical Allyship



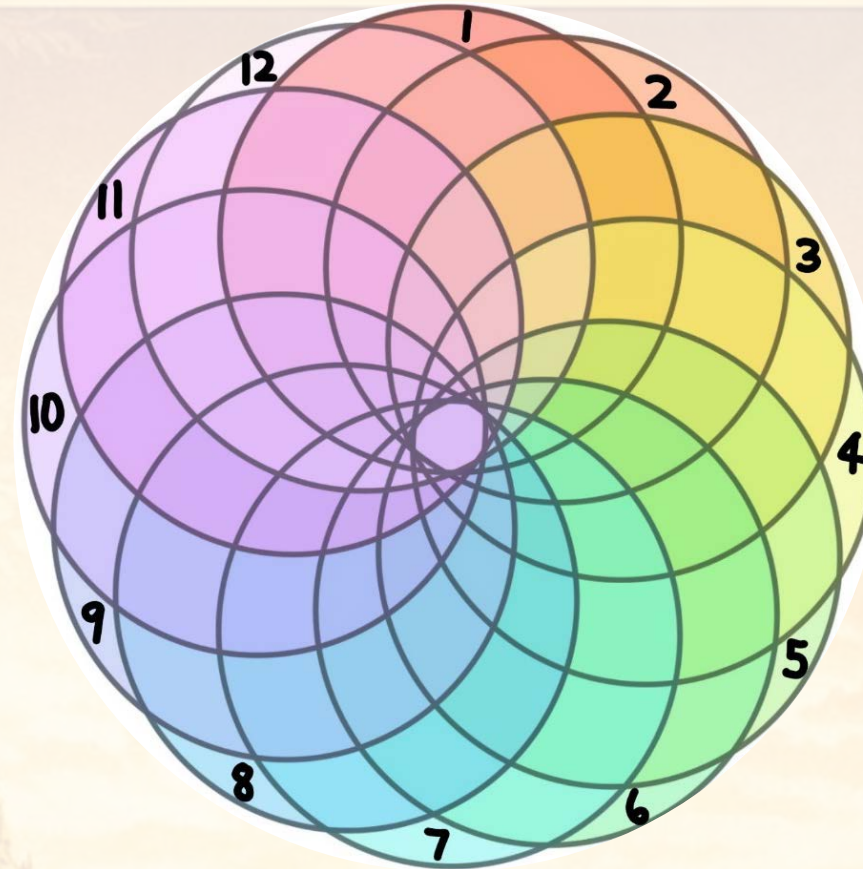
WHEEL OF POWER/PRIVILEGE

Power and Positionality



INTERSECTIONALITY

**Complex and
Comprehensive**



- 1 Race
- 2 Ethnicity
- 3 Gender identity
- 4 Class
- 5 Language
- 6 Religion
- 7 Ability
- 8 Sexuality
- 9 Mental Health
- 10 Age
- 11 Education
- 12 Body size
(...and many more...)

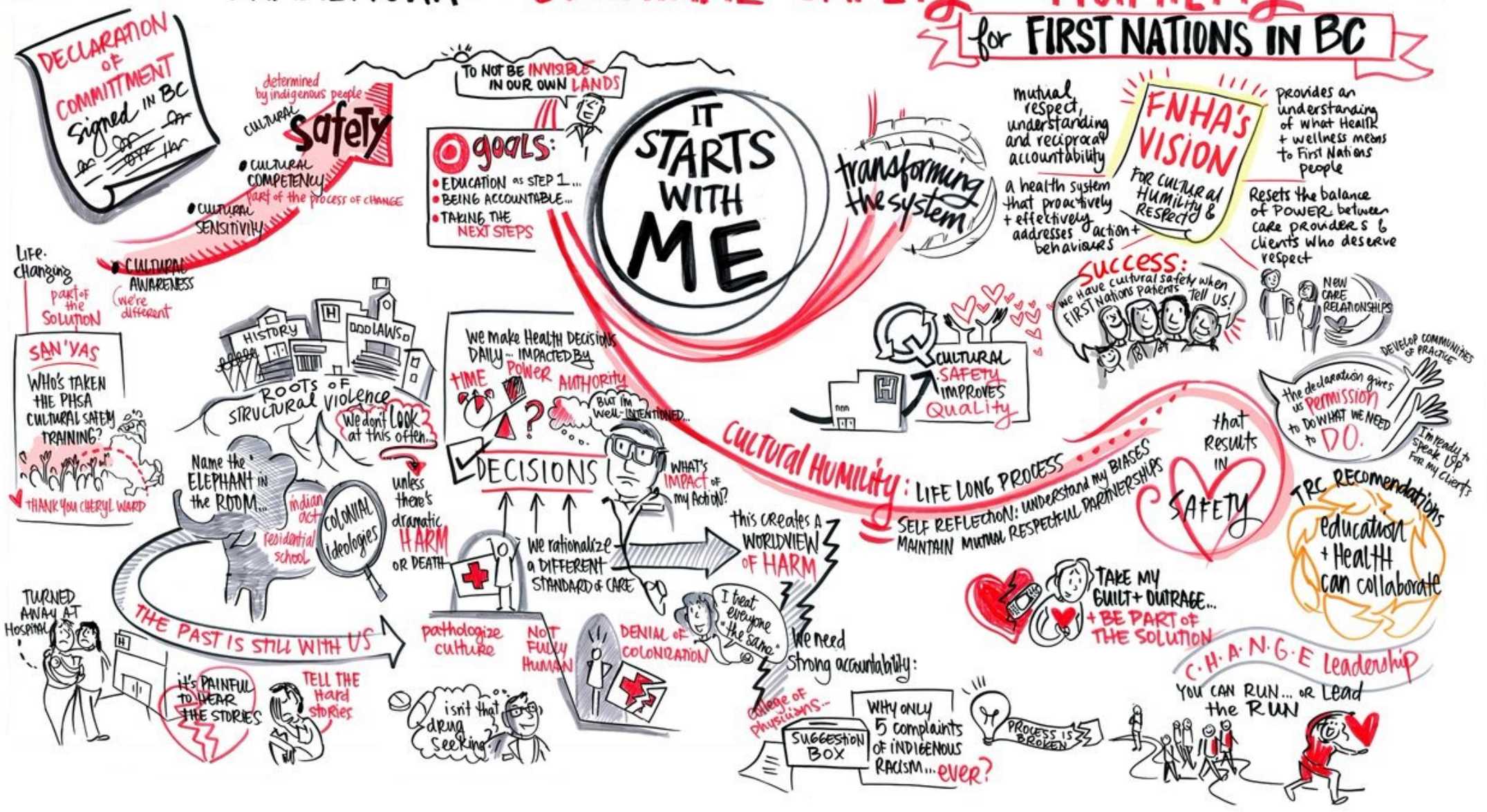
Intersectionality is a lens through which you can see where power comes and collides, where it locks and intersects. It is the acknowledgement that everyone has their own unique experiences of discrimination and privilege.

Cultural Humility

- Ongoing process of **self-reflection**
- Awareness of our own **biases, values, perspectives**
- **Validation** of individual/family's personal and cultural **strengths, resilience** in overcoming challenges

LEADING a FRAMEWORK for CULTURAL SAFETY & HUMILITY

for FIRST NATIONS IN BC



Sam Bradd

Training a Family Medicine and Interprofessional Workforce with Compassion



A Changing Landscape

Emphasis on
Compassionate Care for
Human Health



Understanding power,
privilege, and
positionality
strengthens our
health equity
approach

Training our workforce
and building a culture of
“us”



Barriers to Health Access



Community Engagement and Response

Our community is collectively a wise and remarkable group of knowledge keepers who form a global community of champions with rich expertise and lived experience



Listen

Listening to our Global Community

The Besroul Centre



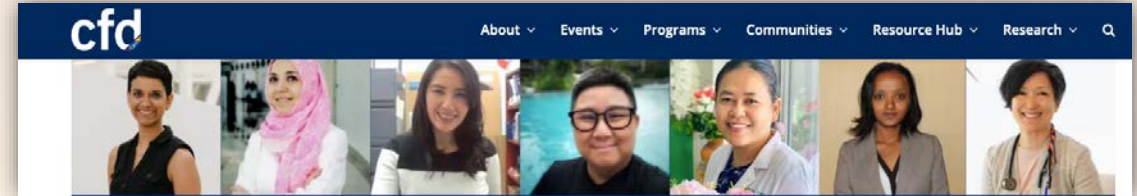
Enhancing PHC through family medicine: A Policy Brief & Dialogue (2025)

Enhancing primary health care through family medicine in Ethiopia.

Meseret Zerihun^{1,4}
Assegid Geleta^{1,4}
Katherine Rouleau^{3,4}
Praseedha Janakiram^{3,4}
Jamie Rodas^{3,4}
Marci Rose⁴
Assefa Abegaz²
Dawit Wondimagegn^{3,4}

1 Family Medicine, Addis Ababa University, Ethiopia
2 The Ethiopia National Center of the African Health
Observatory Platform on Health Systems and Policies

Advancing Women's Excellence in Family Medicine A Global Leadership Program



Toronto International Program: Strengthening Family Medicine and Primary Care



Starfield Summit Toronto 2025



Highly interactive, collective visioning



We Are Listening, And We are Evolving

- Empowerment of our workforce in our setting as our future lies in team-based care
- Engagement and Transformation with people as
 - Advocates
 - Co-designers of their health system
 - Decision makers in the care and delivery of health services



Re-imagining A Future...

“If I could choose to live in any time in history, I would choose tomorrow.”

Dr. Sandro Galea

**“If I could
choose
to live
in any time in history,
I would choose
tomorrow.”**

Informed and Co-Designed by a Wise Team



Honouring the Diversity of Knowledge Keepers in our Community



What Reality Do We Want to Be True?



- For the people we work with?
- For the people we care for?
- What will success look like?
- What will change if we are successful ?

What Reality Do We Want to Be True?

“What are we fighting for?”

Atul Gawande

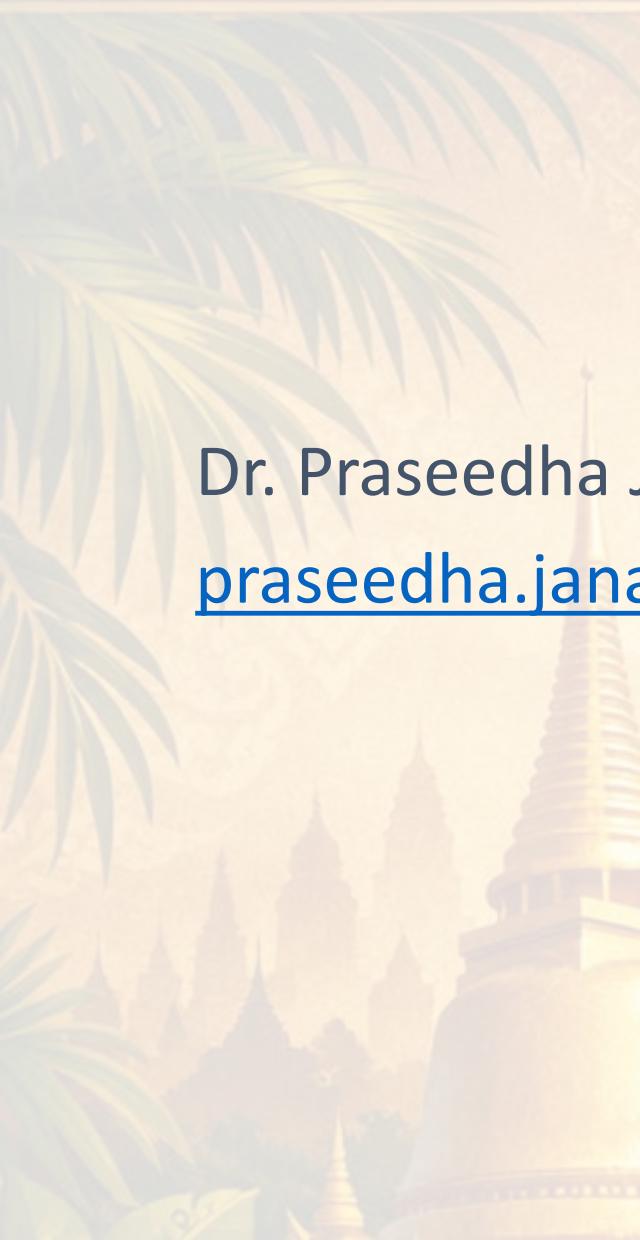




With Gratitude

Dr. Praseedha Janakiram

praseedha.janakiram@utoronto.ca

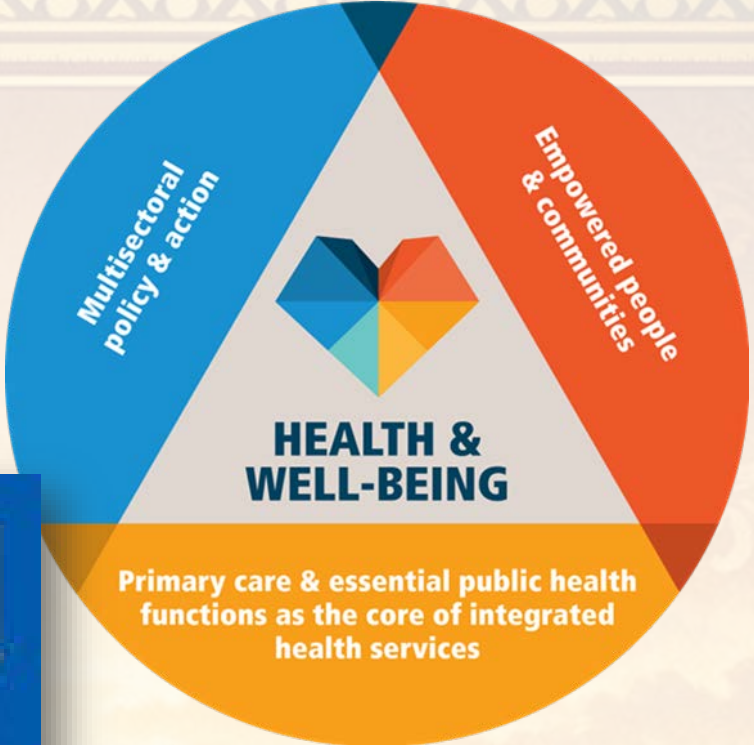


Starfield Summit



3 GOOD HEALTH AND WELL-BEING

1 NO POVERTY Icon: Family of four	2 ZERO HUNGER Icon: Spoon and fork	5 GENDER EQUALITY Icon: Gender symbols	6 CLEAN WATER AND SANITATION Icon: Water tap
7 AFFORDABLE AND CLEAN ENERGY Icon: Sun with power symbol	8 DECENT WORK AND ECONOMIC GROWTH Icon: Factory and people	11 SUSTAINABLE CITIES AND COMMUNITIES Icon: Buildings	12 RESPONSIBLE CONSUMPTION AND PRODUCTION Icon: Recycle symbol
13 CLIMATE ACTION Icon: Earth with flame	14 LIFE BELOW WATER Icon: Fish	15 LIFE ON LAND Icon: Tree and mountains	16 PEACE, JUSTICE AND STRONG INSTITUTIONS Icon: Scales of justice and dove



NEWSCHOOL THINKING

COMMUNITY RELATIONSHIPS LEADERSHIP

2022-2027
DFOM Strategic Plan

Starfield Summit Toronto 2025

“The Family Medicine imperative for better health system performance: strengthening the three components of the PHC approach”

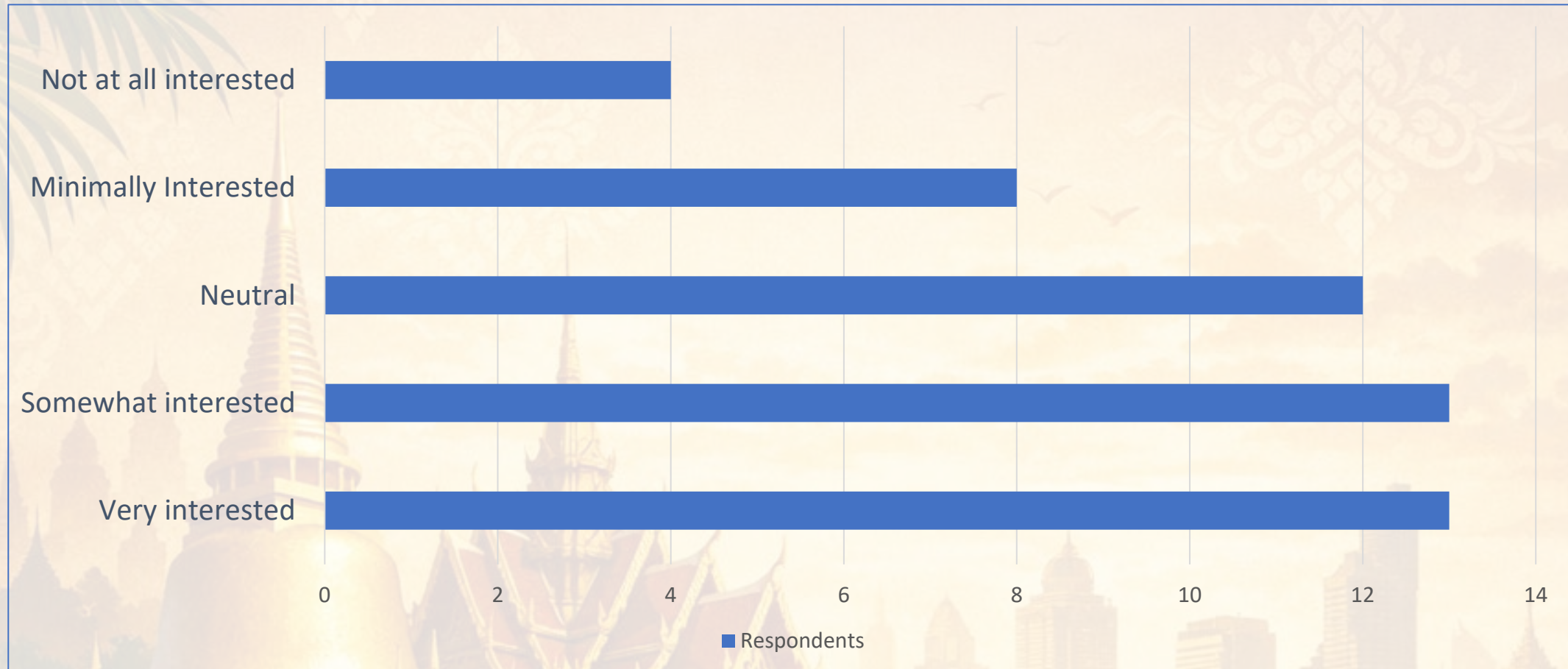
Goals:

- **Optimize the contribution of family medicine to the performance** of PHC-oriented health systems for better health and health equity.
- **Ignite and nurture relationships** among primary care experts and champions from all settings to foster collaboration and **mutual learning**.
 - Diverse experience expertise
 - 92 participants representing 25 countries



Post-Summit Questionnaire results

- Based on your experience and interest, please indicate if you would like to see the topic of disempowerment among the primary care workforce addressed in discussion during the Summit?



Post-Summit Questionnaire results

- Please indicate, on the 5-point scale, the extent to which each of these three expressions of engagement and empowerment are established in your health system ?

